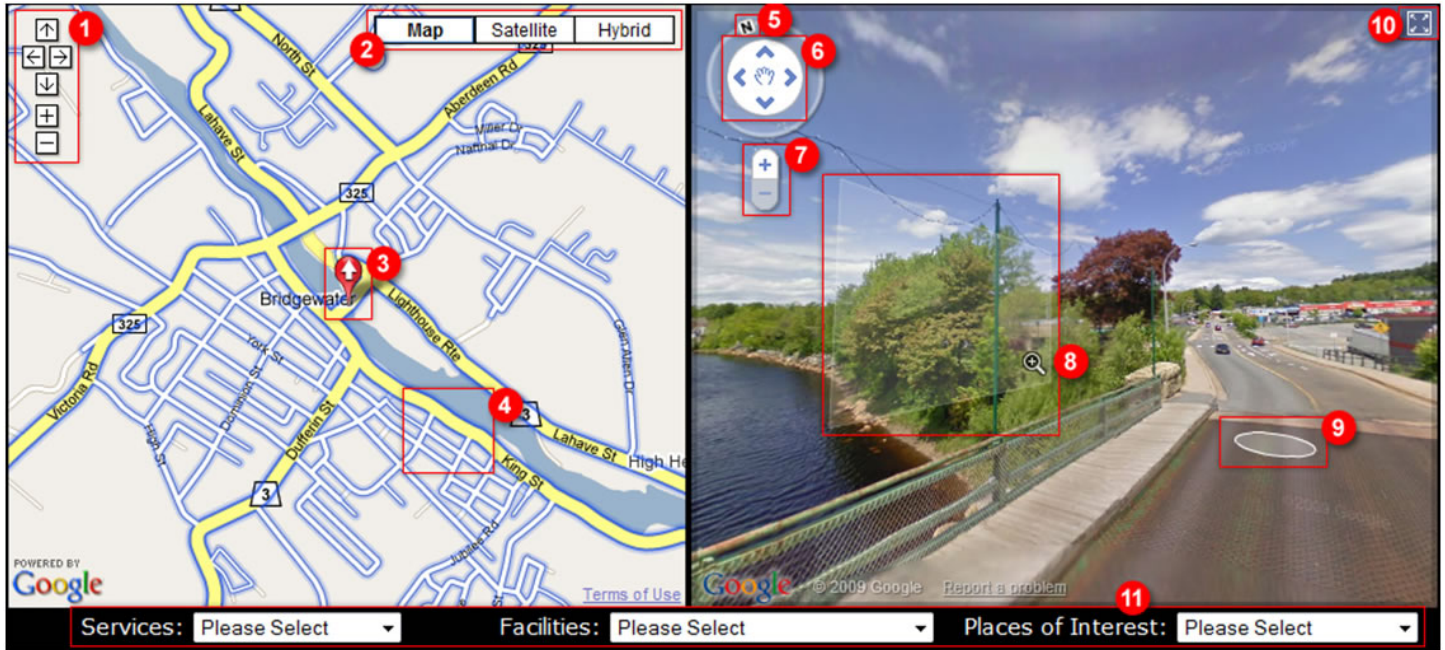


Map Window

Street View Window



Map Controls:

- Pan Up**
Pan Left/Right
Pan Down

Alternate: On the map, hold the left mouse button and drag to pan.
- Zoom In/Out**

Alternate: Use your mouse scroll wheel to zoom.
- Click these buttons for a different view of the map.
- "You Are Here" Icon**

Click and hold this icon with your mouse and drag it to different places on the map to change the Street View Window. Please note that the needs to be placed over a blue outlined road to view Street View. The white arrow indicates the direction you are facing in the Street View Window.
- Street View Available**

Blue outlined roads indicate areas where Street View is available.
- Street View Not Available**

Grey outlined roads are not available in Street View.

Street View Controls:

- View Rotation**

Click and hold the "N" and move it around the circle to change the direction you are facing.

Alternate: Hold the left mouse button anywhere in the window and drag.
- Look Control**

Click the arrows to look in different directions.

Alternate: Hold the left mouse button anywhere in the window and drag.
- Zoom In/Out**
- Alternate Zoom In**

Double click when this icon appears to zoom in.
- Go To**

Double click when this icon appears to move further along a road
- Full Screen Mode**

Press the Full Screen Mode Icon again to exit.

Alternate: "Esc" on your keyboard will also exit Full Screen Mode.
- Quick Links**

Quickly navigate to key areas on the map by selecting the areas of interest from the menus.
- Alternate:** Click the white arrows to move along a road.